



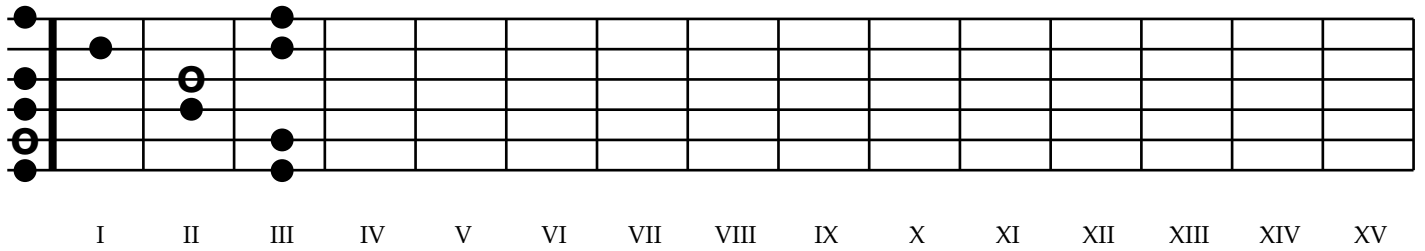
Scales

Minor Pentatonic Scale

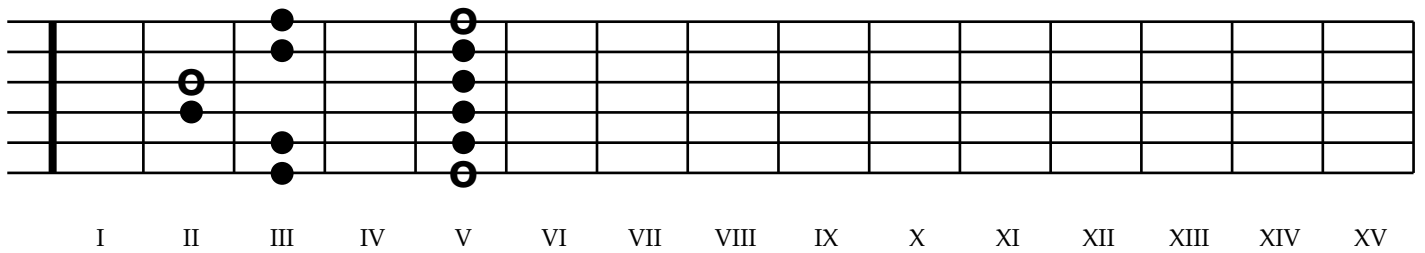
(in A minor)

Pattern 1

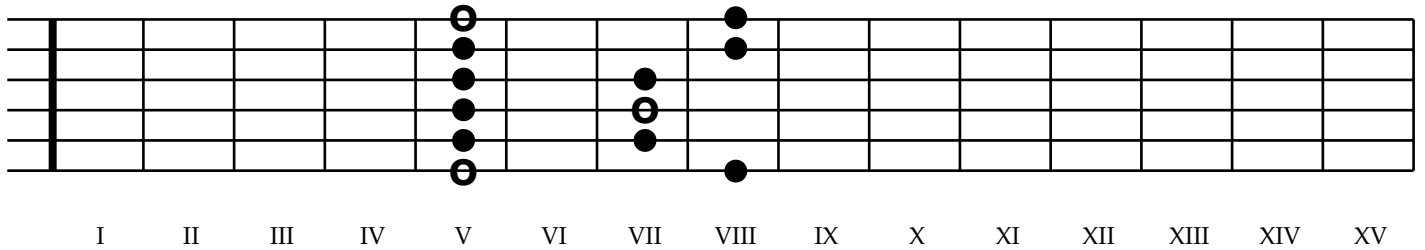
○ = Root



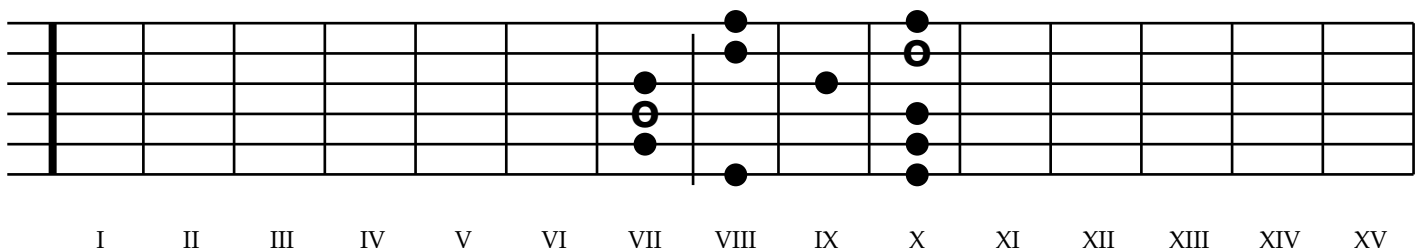
Pattern 2



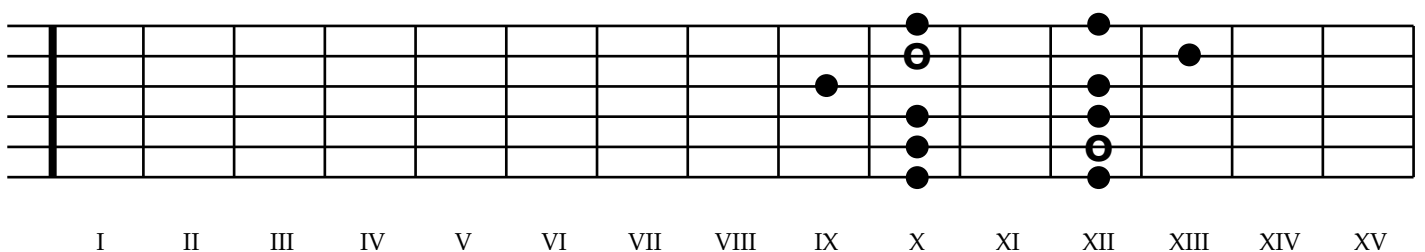
Pattern 3



Pattern 4



Pattern 5



Minor Pentatonic Scale

(in A minor)

Pattern 1

5			b7																
	m3		4																
b7		1																	
4		5																	
1			m3																
5			b7																
	I	II	III	IV	V	VI	VII	VIII	IX	X	XI	XII	XIII	XIV	XV				

Pattern 2

			b7		1														
			4		5														
		1			m3														
		5			b7														
			m3		4														
			b7		1														
	I	II	III	IV	V	VI	VII	VIII	IX	X	XI	XII	XIII	XIV	XV				

Pattern 3

					1			m3											
					5			b7											
					m3		4												
					b7		1												
					4		5												
					1			m3											
	I	II	III	IV	V	VI	VII	VIII	IX	X	XI	XII	XIII	XIV	XV				

Pattern 4

								m3		4									
								b7		1									
							4		5										
							1				m3								
							5				b7								
								m3			4								
	I	II	III	IV	V	VI	VII	VIII	IX	X	XI	XII	XIII	XIV	XV				

Pattern 5

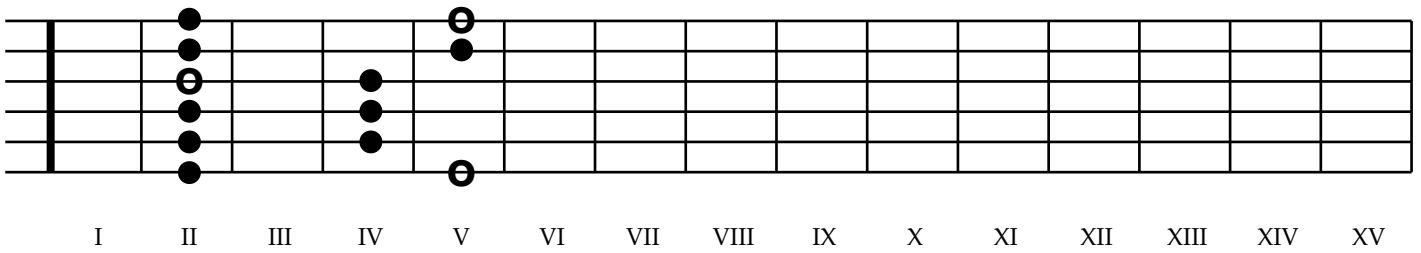
										4		5							
										1			m3						
									5				b7						
											m3		4						
											b7		1						
											4		5						
	I	II	III	IV	V	VI	VII	VIII	IX	X	XI	XII	XIII	XIV	XV				

Major Pentatonic Scale

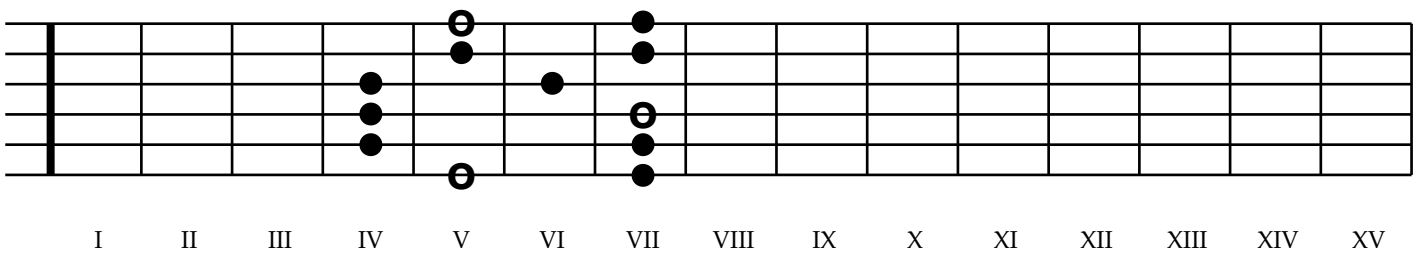
(in A major)

Pattern 3

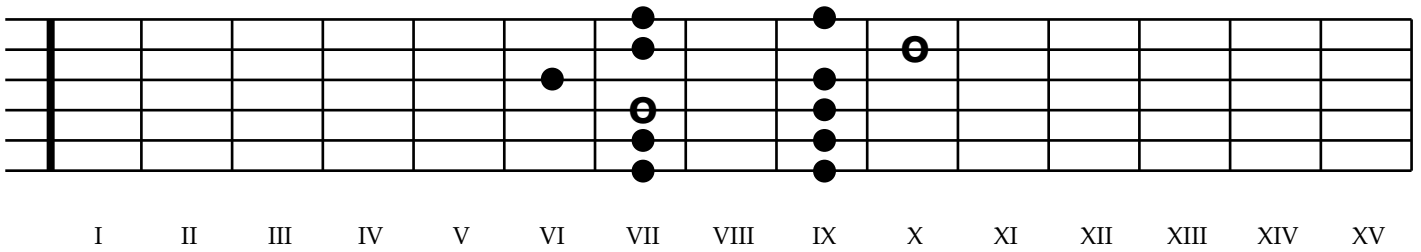
○ = Root



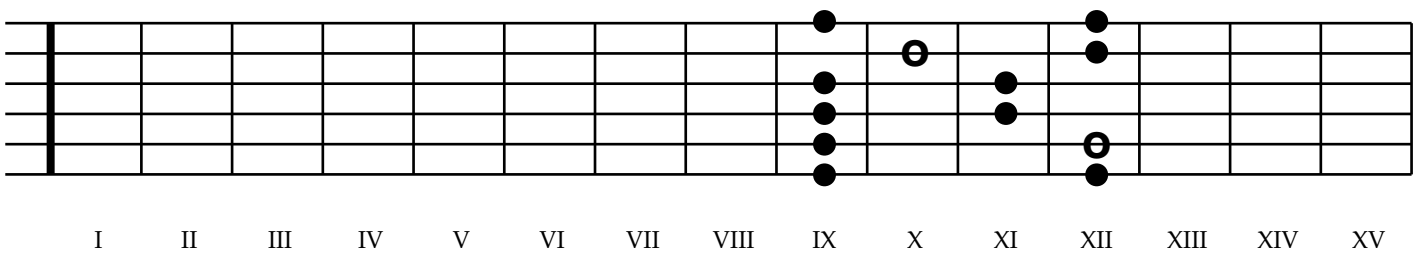
Pattern 4



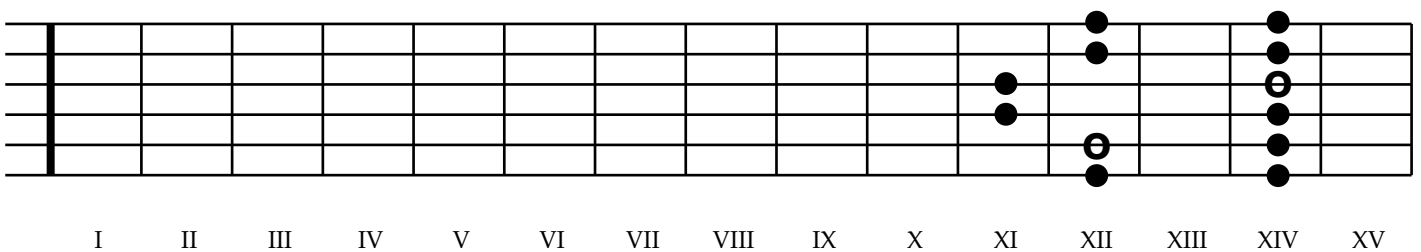
Pattern 5



Pattern 1



Pattern 2



Major Pentatonic Scale

(in A major)

Pattern 3

Fretboard diagram for Pattern 3. The scale is shown across 15 frets (I to XV). Fingerings are indicated by numbers 1-5 above or below the notes.

	6			1										
	3			5										
	1													
	5		2											
	2		6											
	6		3											
	1													
I	II	III	IV	V	VI	VII	VIII	IX	X	XI	XII	XIII	XIV	XV

Pattern 4

Fretboard diagram for Pattern 4. The scale is shown across 15 frets (I to XV). Fingerings are indicated by numbers 1-5 above or below the notes.

				1		2								
				5		6								
			2		3									
			6											
			3											
				1		1								
				5		5								
				2		2								
I	II	III	IV	V	VI	VII	VIII	IX	X	XI	XII	XIII	XIV	XV

Pattern 5

Fretboard diagram for Pattern 5. The scale is shown across 15 frets (I to XV). Fingerings are indicated by numbers 1-5 above or below the notes.

						2		3						
						6								
					3				1					
						1		5						
						5		2						
						2		6						
								3						
I	II	III	IV	V	VI	VII	VIII	IX	X	XI	XII	XIII	XIV	XV

Pattern 1

Fretboard diagram for Pattern 1. The scale is shown across 15 frets (I to XV). Fingerings are indicated by numbers 1-5 above or below the notes.

								3		1		5		
												2		
											6			
											3			
												1		
												5		
I	II	III	IV	V	VI	VII	VIII	IX	X	XI	XII	XIII	XIV	XV

Pattern 2

Fretboard diagram for Pattern 2. The scale is shown across 15 frets (I to XV). Fingerings are indicated by numbers 1-5 above or below the notes.

											5		6	
												2		3
														1
											6			5
											3			2
												1		5
												5		6
I	II	III	IV	V	VI	VII	VIII	IX	X	XI	XII	XIII	XIV	XV

Blues Scale

(in A)

Pattern 1

○ = Root X = b5

A guitar fretboard diagram for Pattern 1, spanning frets I to XV. The notes are: I (A), II (B), III (C), IV (D), V (E), VI (F), VII (G), VIII (A), IX (B), X (C), XI (D), XII (E), XIII (F), XIV (G), XV (A). The notes are placed on the strings as follows: I (A) on the 5th string, 2nd fret; II (B) on the 4th string, 2nd fret; III (C) on the 3rd string, 2nd fret; IV (D) on the 2nd string, 2nd fret; V (E) on the 1st string, 2nd fret; VI (F) on the 5th string, 3rd fret; VII (G) on the 4th string, 3rd fret; VIII (A) on the 3rd string, 3rd fret; IX (B) on the 2nd string, 3rd fret; X (C) on the 1st string, 3rd fret; XI (D) on the 5th string, 4th fret; XII (E) on the 4th string, 4th fret; XIII (F) on the 3rd string, 4th fret; XIV (G) on the 2nd string, 4th fret; XV (A) on the 1st string, 4th fret. The notes are marked with solid black circles. The b5 notes (F and C) are marked with an 'X'.

Pattern 2

A guitar fretboard diagram for Pattern 2, spanning frets I to XV. The notes are: I (A), II (B), III (C), IV (D), V (E), VI (F), VII (G), VIII (A), IX (B), X (C), XI (D), XII (E), XIII (F), XIV (G), XV (A). The notes are placed on the strings as follows: I (A) on the 5th string, 2nd fret; II (B) on the 4th string, 2nd fret; III (C) on the 3rd string, 2nd fret; IV (D) on the 2nd string, 2nd fret; V (E) on the 1st string, 2nd fret; VI (F) on the 5th string, 3rd fret; VII (G) on the 4th string, 3rd fret; VIII (A) on the 3rd string, 3rd fret; IX (B) on the 2nd string, 3rd fret; X (C) on the 1st string, 3rd fret; XI (D) on the 5th string, 4th fret; XII (E) on the 4th string, 4th fret; XIII (F) on the 3rd string, 4th fret; XIV (G) on the 2nd string, 4th fret; XV (A) on the 1st string, 4th fret. The notes are marked with solid black circles. The b5 notes (F and C) are marked with an 'X'.

Pattern 3

A guitar fretboard diagram for Pattern 3, spanning frets I to XV. The notes are: I (A), II (B), III (C), IV (D), V (E), VI (F), VII (G), VIII (A), IX (B), X (C), XI (D), XII (E), XIII (F), XIV (G), XV (A). The notes are placed on the strings as follows: I (A) on the 5th string, 2nd fret; II (B) on the 4th string, 2nd fret; III (C) on the 3rd string, 2nd fret; IV (D) on the 2nd string, 2nd fret; V (E) on the 1st string, 2nd fret; VI (F) on the 5th string, 3rd fret; VII (G) on the 4th string, 3rd fret; VIII (A) on the 3rd string, 3rd fret; IX (B) on the 2nd string, 3rd fret; X (C) on the 1st string, 3rd fret; XI (D) on the 5th string, 4th fret; XII (E) on the 4th string, 4th fret; XIII (F) on the 3rd string, 4th fret; XIV (G) on the 2nd string, 4th fret; XV (A) on the 1st string, 4th fret. The notes are marked with solid black circles. The b5 notes (F and C) are marked with an 'X'.

Pattern 4

A guitar fretboard diagram for Pattern 4, spanning frets I to XV. The notes are: I (A), II (B), III (C), IV (D), V (E), VI (F), VII (G), VIII (A), IX (B), X (C), XI (D), XII (E), XIII (F), XIV (G), XV (A). The notes are placed on the strings as follows: I (A) on the 5th string, 2nd fret; II (B) on the 4th string, 2nd fret; III (C) on the 3rd string, 2nd fret; IV (D) on the 2nd string, 2nd fret; V (E) on the 1st string, 2nd fret; VI (F) on the 5th string, 3rd fret; VII (G) on the 4th string, 3rd fret; VIII (A) on the 3rd string, 3rd fret; IX (B) on the 2nd string, 3rd fret; X (C) on the 1st string, 3rd fret; XI (D) on the 5th string, 4th fret; XII (E) on the 4th string, 4th fret; XIII (F) on the 3rd string, 4th fret; XIV (G) on the 2nd string, 4th fret; XV (A) on the 1st string, 4th fret. The notes are marked with solid black circles. The b5 notes (F and C) are marked with an 'X'.

Pattern 5

A guitar fretboard diagram for Pattern 5, spanning frets I to XV. The notes are: I (A), II (B), III (C), IV (D), V (E), VI (F), VII (G), VIII (A), IX (B), X (C), XI (D), XII (E), XIII (F), XIV (G), XV (A). The notes are placed on the strings as follows: I (A) on the 5th string, 2nd fret; II (B) on the 4th string, 2nd fret; III (C) on the 3rd string, 2nd fret; IV (D) on the 2nd string, 2nd fret; V (E) on the 1st string, 2nd fret; VI (F) on the 5th string, 3rd fret; VII (G) on the 4th string, 3rd fret; VIII (A) on the 3rd string, 3rd fret; IX (B) on the 2nd string, 3rd fret; X (C) on the 1st string, 3rd fret; XI (D) on the 5th string, 4th fret; XII (E) on the 4th string, 4th fret; XIII (F) on the 3rd string, 4th fret; XIV (G) on the 2nd string, 4th fret; XV (A) on the 1st string, 4th fret. The notes are marked with solid black circles. The b5 notes (F and C) are marked with an 'X'.

Blues Scale

(in A)

Pattern 1

5			b7																
	m3		4	b5															
b7		1																	
4	b5	5																	
1			m3																
5			b7																
	I	II	III	IV	V	VI	VII	VIII	IX	X	XI	XII	XIII	XIV	XV				

Pattern 2

			b7																
			4	b5															
	1				1														
	5				m3														
			m3		b7														
			b7		4	b5													
					1														
	I	II	III	IV	V	VI	VII	VIII	IX	X	XI	XII	XIII	XIV	XV				

Pattern 3

	I	II	III	IV	V	VI	VII	VIII	IX	X	XI	XII	XIII	XIV	XV				

Pattern 4

	I	II	III	IV	V	VI	VII	VIII	IX	X	XI	XII	XIII	XIV	XV				

Pattern 5

	I	II	III	IV	V	VI	VII	VIII	IX	X	XI	XII	XIII	XIV	XV				

**Please get the full version
to view this page!**

[**www.guitar.ch**](http://www.guitar.ch)