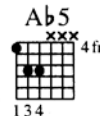
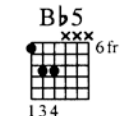
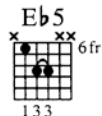
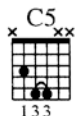


THE BAD TOUCH *The Bloodhound Gang*

WORDS AND MUSIC BY Jimmy Pop Ali TRANSCRIBED BY Jeff Perrin

NEW FORMAT

Bass lines are included in the guitar transcriptions



Free Time

Ha Ha Well now we call this the act of mating But there are several other very important differences between human beings and animals that you should know about

(0:00)

(10 seconds)

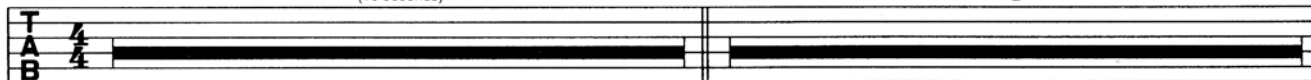
A Intro (0:10)

Moderate Disco ♩ = 124

(8th time) I'd appreciate your input

1 (drums enter)

8



(0:25, 1:43)
N.C. (Cm)

Gr. 2 plays Rhy. Fill 1
Gr. 4 plays Fill 1 on D.S.

(Eb)

(Bb)

(Ab)

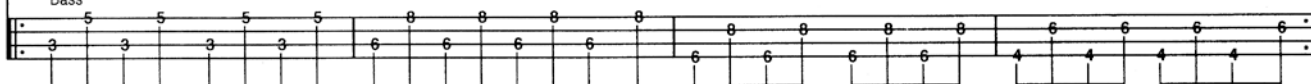
9 Gtr. 1



Bass Fig. 1

* Bass

end Bass Fig. 1

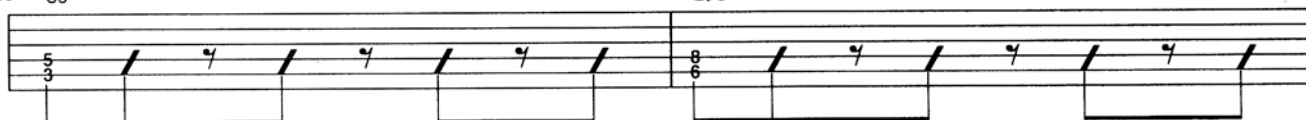


* Synth. bass arr. for bass gtr.

B Verses (0:41, 1:59)

1. Sweat baby sweat touch you want it sex is a Texas drought Me and you
 2. Love of two - hand touch you clean up with a mop and bucket I want you
 13 C5 on your thighs high tide B - 5 you sunk my battleship Please turn me

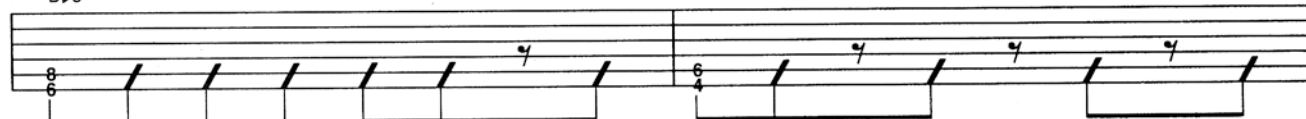
13 C5



Bass plays Bass Fig. 1 twice

do the kind of stuff that only Prince would sing about So put your
 smothered want you covered like my Waffle House hash browns Come a-quicker than Fed -
 lost catacombs of Egypt only an God knows where we stuck it Hieroglyphics
 15 Bb5 on I'm Mister Coffee with an automatic drip So show me

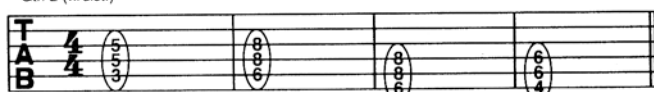
15 Bb5



Rhy. Fill 1 (0:25, 1:12, 1:28, 2:30, 2:46, 3:17, 3:33)

C5 Eb5 Bb5 Ab5

* Gtr. 2 (w/dist.)

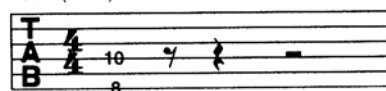


mp

* Synth. arr. for gtr.

Fill 1 (1:44)

* Gtr. 4 (w/dist.)



* Horns arr. for gtr.

As heard on the Bloodhound Gang's Geffen recording *Hooray for Boobies*

©1999 Universal-Songs of Polygram International, Inc., Hey Rudy Music Publishing, Inc. and the Jimmy Franks Publishing Company. All rights controlled and administered by Universal-Songs of Polygram International, Inc. All rights reserved. Used by permission of Warner Bros. Publications US, Inc., Miami, FL 33014.

THE BAD TOUCH *The Bloodhound Gang*

(1.) hands down my pants and I'll bet you'll feel nuts Yes I'm
 Ex never reach an apex Just like Coca-Cola stock you are inclined To make me
 (2.) yours I'll show you mine "Tool Time" you'll Lovett just like Lyle And then we'll
 18 C5 Eb5

Siskel Yes I'm Ebert and you're getting two thumbs up You've had enough
 rise an hour I'm early just like Daylight Savings Time Do it now
 notion that the motion of your ocean means "Small Craft Advisory" So if I capsize
 do it doggy style so we can both watch "X-Files" Do it now
 19 Bb5 Eb5

Gtrs. 2 & 3 play Rhy. Fill 2 on repeat

C 1st and 2nd Choruses (1:12, 2:30)

You and me baby ain't nothin' but mammals So let's
 C5 Eb5

Gtr. 2 plays Rhy. Fill 1

Rhy. Fig. 1

* Gtr. 3 (w/dist.)

21 P.M.

f

* Synths. arr. for gtr.

D Interlude (1:28, 2:46)

do it like they do on the Discovery Channel } Do it again now
 Bb5 Ab5 Gettin' horny now

C5

Gtr. 2 plays Rhy. Fill 1

Gtr. 3 plays Rhy. Fig. 1

end Rhy. Fig. 1

** Gtr. 4 (w/dist.)

23 P.M.

ff

Bass plays Bass Fig. 1

** Horns arr. for gtr.

Rhy. Fill 2 (1:10, 2:28, 3:15)

Ab5

Gtr. 2

Gtr. 3

T

A

B

f

THE BAD TOUCH *The Bloodhound Gang*

(2nd time on 1st Interlude) D.S. rit
(go back to meas. 10)

26 Eb5 Bb5 Ab5

E Breakdown (3:02)

You and me baby ain't nothin' but mammals so let's do it like they do on the Discovery
N.C.(Cm) (Eb5) (Bb)

Gr. 3 (w/dist. & flanger effect)

29 P.M.

F 3rd Chorus (3:17)

Channel { Do it again now
Do it now You and me baby ain't nothin' but mammals So let's

(Ab5)

Gr. 2 plays Rhy. Fill 2 on repeat

C5

Gr. 2 plays Rhy. Fill 1

Eb5

32 P.M.

Bass plays Bass Fig. 1

G Outro (3:33)

do it like they do on the Discovery Channel { Do it again now
Bb5 Ab5 Yeah do it now

C5

Gr. 2 plays Rhy. Fill 1

Gr. 3 plays Rhy. Fig. 1

Gr. 4

35 P.M.

Bass plays Bass Fig. 1

(play 4 times & fade out)

38 Eb5 Bb5 Ab5