

"BAD MOON RISING" Creedence Clearwater Revival

As heard on *Green River* (FANTASY)

Words and Music by **John Fogerty** • Transcribed by **Matt Scharfglass**

Gtrs. 1 and 3 are tuned down one whole step (low to high): D G C F A D.

All notes and chords played by Gtrs. 1 and 3 sound one whole step lower than written (key of D).

Gtr. 1 chords:

Gtr. 2 (acous.) and Bass are in standard tuning.

Gtr. 2 chords (standard tuning):

* Chord names in parentheses reflect actual sounding key.

A Intro (0:00)

Moderately Fast $\text{♩} = 90$

Chord progression: E^{VII} B A^V E E6 E E6 E E6

Gtr. 1 (clean elec. w/reverb) (repeat prev. chord)

Gtr. 2 (acous.) (D)

Bass (repeat previous measure)

B Verses (0:06, 0:38, 1:31)

1. I see a bad moon risin'
2. I hear hurricanes got your things together
3. Hope you

E B7 A E E6 E E6 E E6

Gtr. 3 plays Fill 1 on 2nd verse (see next page)

Gtr. 3 plays Fill 2 on 3rd verse (see next page)

Rhy. Fig. 1

end Rhy. Fig. 1

5

(D) Rhy. Fig. 1a (A) (G) (D) end Rhy. Fig. 1a

Bass Fig. 1 end Bass Fig. 1

"BAD MOON RISING"

I see trouble on the way
 I know the end is comin' soon
 Hope you are quite prepared to die

Gtr. 2 plays Rhy. Fig. 1a three times simile (see meas. 5)

Gtr. 1

9 (repeat previous four measures)

4

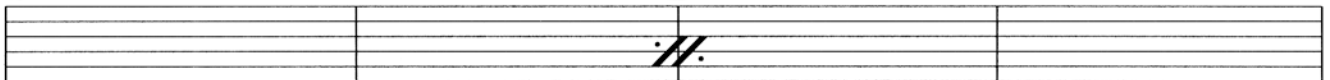


Bass plays Bass Fig. 1 three times (see meas. 5)

I see earthquakes and lightnin'
 I fear rivers overflowin'
 Looks like we're in for nasty weather

13

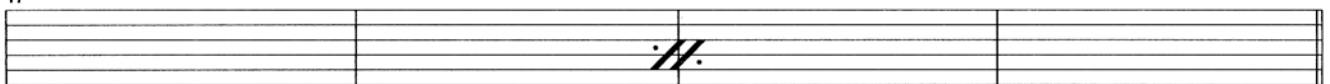
4



I see bad times today
 I hear the voice of rage and ruin
 One eye is taken for an eye Well

17

4



Fill 1 (0:38)

E B7 A E
 (D) (A7) (G) (D)

* Gtr. 3 (clean elec.)

*w/pick and fingers

(play 3 times)



*tuned down one whole step

* Notes on strings 6 - 4 are played with the pick; strings 3 - 1 are picked with the middle finger.

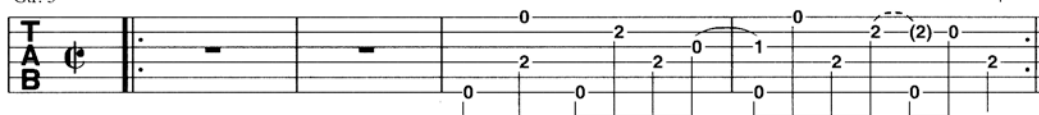
Fill 2 (1:31)

E B7 A E
 (D) (A7) (G) (D)

Gtr. 3

w/pick and fingers

(play 4 times)

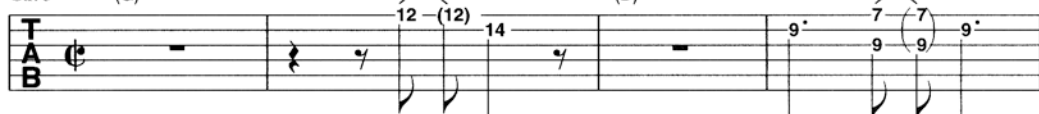


Fill 3 (1:52)

A
 (G)

E
 (D)

Gtr. 3



"BAD MOON RISING"

C Chorus (0:27, 0:59, 1:52)

Don't go around tonight

Well it's bound to take your life

There's a bad

A E E6 E E6 E E6 E E6 B7

Gr. 3 plays Fill 3 third time (see previous page)

Gr. 1

Rhy. Fig. 2

21

(G)

(D)

(A)

Gr. 2

Rhy. Fig. 2a

Bass

(3rd time) skip ahead to **E**
moon on the rise

E

E6 E

E6

E

E6

All right
E6 E E6

Gr. 3

26

Gr. 1

end Rhy. Fig. 2

(G)

(D)

end Rhy. Fig. 2a

Gr. 2

Bass

"BAD MOON RISING"

D Guitar Solo (1:10)

E (D) B7 (A) A (G) E (D) E6 E E6 E E6

Gr. 1 plays Rhy. Fig. 1 twice simile (see meas. 5)
Gr. 2 plays Rhy. Fig. 1a twice simile (see meas. 5)

*Gr. 3 (clean elec.)

30 *let ring* *let ring*

*tuned down one whole step

Bass

34 *let ring*

A (G) E (D) E6 E E6 E E6 E E6

Gr. 1 plays Rhy. Fig. 2 simile (see meas. 21)
Gr. 2 plays Rhy. Fig. 2a simile (see meas. 21)

38

B7 (A) A (G) E (D) E6 E E6 E *go back to B Verse*

42

"BAD MOON RISING"

E (2:01)

Don't come around tonight Well it's

E E6 E E6 E E6 A

46

bound to take your life There's a bad

E E6 E E6 B7

50

moon on the rise

A E E6 E E6 E

53