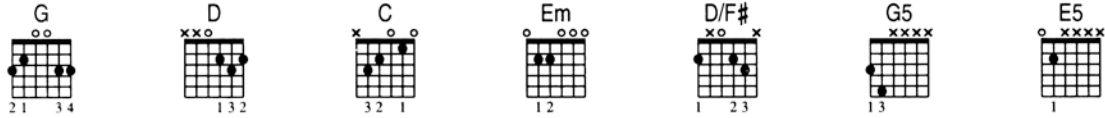


WONDERFUL *Everclear*

WORDS BY Art Alexakis MUSIC BY Art Alexakis and Everclear TRANSCRIBED BY Jeff Perrin

NEW FORMAT

Bass lines are included in the guitar transcriptions



A Intro (0:14)

Moderately ♩ = 94

1. 1

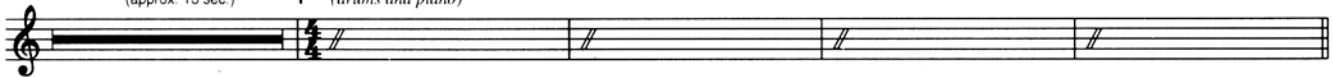
"Wonderful" dialogue
(approx. 13 sec.)

G 1 (drums and piano)

D

C

D



B 1st Verse (0:24)

close my eyes when it gets too sad I think thoughts that I know are bad Close my eyes and I count to ten Hope it's over when I open them I

G
Rhy. Fig. 1

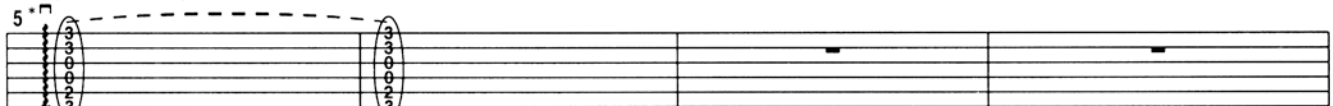
*(D)

end Rhy. Fig. 1

*(C)

*(D)

Gtr. 1 (acous.) and Gtr. 2 (elec. w/tremolo)



*upstroke

*Piano plays chords indicated in parentheses.

want the things that I had before like a Star Wars poster on my bedroom door I wish I could count to ten Make everything be wonderful again I

G

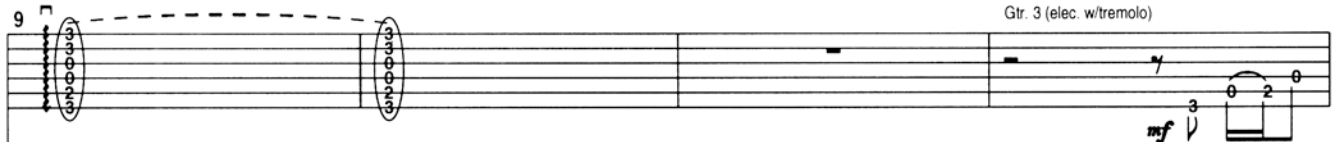
*(D)

*(C)

*(D)

Gtrs 1 and 2

Gtr. 3 (elec. w/tremolo)



Bass



As heard on Everclear's Capitol recording *Songs from an American Movie Vol. One: Learning How to Smile*

©2000 Irving Music, Inc. & Evergleam Music & Montalupis Music & Commongreen Music (BMI). All rights reserved. Used by permission of Warner Bros. Publications US, Inc., Miami, FL 33014.

WONDERFUL *Everclear*

hope my mom and I hope my dad will figure out why they get so mad Hear them scream I hear them fight They say bad words that make me want to cry I

G D C D

Gtr. 2 plays Rhy. Fig. 1

13 Gtr. 3 Rhy. Fig. 2A

end Rhy. Fig. 2A

This system contains musical notation for the first four measures. The top staff is the guitar (Gtr.) staff, showing chords G, D, C, and D with various fretting and picking patterns. The middle staff is labeled 'Gtr. 1 Rhy. Fig. 2' and shows a rhythmic pattern with a downstroke. The bottom staff is the bass line, showing the bass notes for each measure. Annotations include '*doubled by 12-string acous.' and '*downstroke'.

close my eyes when I go to bed and I dream of angels who make me smile I feel better when I hear them say everything will be wonderful someday

G D C D

Gtr. 3 Gtr. 2 plays Rhy. Fig. 1

17 Gtr. 1 plays Rhy. Fig. 2

This system contains musical notation for measures 17-20. It features guitar and bass staves with chord changes (G, D, C, D) and rhythmic patterns. The guitar part includes a section labeled 'Gtr. 1 plays Rhy. Fig. 2'.

C 1st Pre-chorus

Promises mean everything when you're little and the world's so big I just don't understand how

C D G

21 Gtr. 3

This system contains musical notation for the 1st Pre-chorus (measures 21-24). It includes guitar and bass staves. The guitar part features a section labeled 'Gtr. 4 (slightly dirty. elec.)' with a dynamic marking of 'mf'. The bass line shows the bass notes for each measure.

WONDERFUL *Everclear*

G 2nd Chorus (2:12)

Na na na na na na na na Na na na na na na na No I Na na na na na na na
 (No No I don't want to hear you tell me
 Em D Em C Em

Gr. 5 plays Riff A eight times

Gr. 6 (elec.)

47

P.M. -----

Gr. 6 (elec.) *mp*

Gtrs. 1, 2 and 3

Bass *Bass Fig. 1*

1. Na na na na na na na na Na na na na na na na I don't want to hear you say that
 everything is wonderful now everything is wonderful now) I don't want to hear you say you
 D Em Dsus4 D C
 P.M. ----- P.M. -----

H Bridge* (2:33)

Gr. 5 plays Fill 4

Gr. 4

50

P.M. ----- P.M. -----

Gr. 4

Gtrs. 1, 2 and 3**

***Gr. 3 w/dist.)*
**Play repeat simile*

end Bass Fig. 1

I will understand someday No no no no no no no no
 both have grown in different ways No no no no no no no no

53

D G Em G Em

