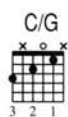
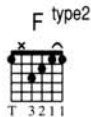
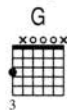
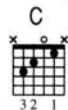
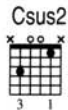


go your own way

WORDS & MUSIC BY LINDSEY BUCKINGHAM
TRANSCRIBED BY ANDY ALEDORT

FLEETWOOD MAC

*Capo V (Gtr.1 only) All chord grids shown below are relative to the capo and sound a perfect fourth higher than written.



A Intro

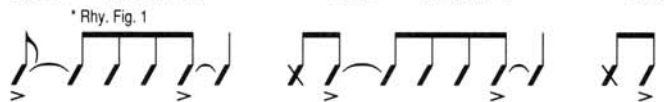
Moderate Rock ♩ = 138

B 1st Verse

Lovin' you isn't the right

Csus2 C Csus2 C Csus2 C Csus2 C Csus2

Gtr. 1
(12-string acous., capo V)



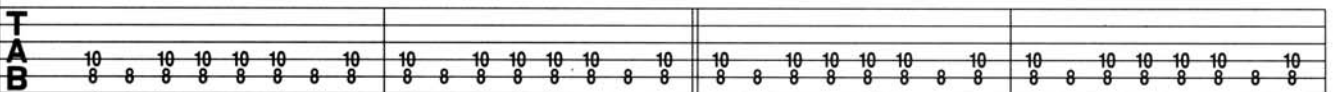
1 F5

* Rhy. Fig. 1



Gtr. 2
(elec.)

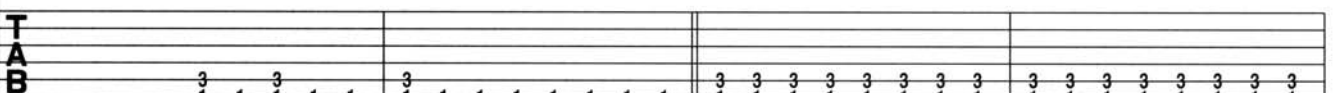
P.M.-----



Gtr. 3
(elec.)

P.M.₄

P.M.-----



* includes Gtrs. 1 - 3.

As heard on Fleetwood Mac's Warner Bros. recording *Rumours*

©1976 Now Sounds Music. All rights reserved.

go your own way

FLEETWOOD MAC

you my world How can I when you won't take

Csus2 Gsus4 G G6 G5 Gsus4 Fsus2 F Fsus2 F Fsus2 F Fsus2 F Fsus2

13

P.M.-----4

P.M.---4 P.M.---4 P.M.

P.M.-----

it from me **C** Chorus You can go your own way

Csus2 C end Rhy. Fig. 1 end Rhy. Fig. 1 Rhy. Fig. 2 F type2

17

end Rhy. Fig. 1 Rhy. Fig. 2A

P.M.-----4

Gtrs. 2 and 3 let ring

end Rhy. Fig. 1

P.M.-----4

(Bkgd. voc.: Go your own way) You can call it another

G C/G G C/G G end Rhy. Fig. 2 Am Fsus2

21

end Rhy. Fig. 2A

P.M.

go your own way

FLEETWOOD MAC

lonely day

You can go your own way

Gtr. 4 plays Fill 3 third time

G C/G G C/G G Am F type2

25

(3rd time) To Coda II \oplus 2

(2nd time) To Coda I \oplus 1

D 2nd Verse

(Go your own way)

Tell me why

Gtr. 1-3 play Rhy. Fig.1

G Csus2 C Csus2 C Csus2 C Csus2 C Csus2

29

fbk. *p* *cresc.*

Gtr. 4

pitch: C

Everything turned around

Packing up

shacking up's all you wanna do

C Csus2 G Gsus4 Fsus4 F Fsus2 F Fsus2 F Fsus2 F Fsus2 Csus2

33

mf fbk.

pitch: F

Fill 3

8va

Gtr. 4

full full full

20 20 20 (20) 13 (13) (13)

TAB

5 3

go your own way

FLEETWOOD MAC

D.S. at Coda II^2

59 F Fsus2 F Fsus2 F Fsus2 F Fsus2 Csus2 C Csus2 C

Coda II^2

your own way You can call it another lonely day

Gr. 1 G

Gr. 1 plays Rhy. Fig. 2
Gtrs. 2 & 3 play Rhy. Fig. 2A
Am F type2

G C/G G C/G G

63 P.M. Gtrs. 2 & 3 Gr. 4

F Outro

Gr. 1 plays Rhy. Fig. 2 till fade
Gtrs. 2 & 3 play Rhy. Fig. 2A till fade

68 Am F type2 G C/G G C/G G

72 Am F type2 G C/G G C/G G

76 Am F type2 G C/G G C/G G

go your own way bassline

WORDS & MUSIC BY LINDSEY BUCKINGHAM
TRANSCRIBED BY ANDY ALEDORT

FLEETWOOD MAC

A Intro **B** 1st, 2nd Verses
Moderate Rock ♩ = 138

1. Lovin' you...
2. Tell me why...

1 2 * F C

Elec. Bass w/ pick *mf*

*Chord names reflect overall tonality.

7 Bb F

11 C

15 Bb F

C 1st and 2nd Choruses

(2nd time on 2nd Chorus) *To Coda* ⊕ 1., 2. || 3. *D.S.* ⊕ *at Coda* ⊕

19 Dm Bb C

As heard on Fleetwood Mac's Warner Bros. recording *Rumours*

©1976 Now Sounds Music. All rights reserved.

go your own way

FLEETWOOD MAC

⊕ Coda

D Guitar Solo

24 C F

Musical notation for guitar solo starting at measure 24. It features a bass clef, a key signature of one flat, and a 4/4 time signature. The melody consists of eighth notes. The guitar part below shows triplets of eighth notes and single notes.

28 C Bb

Musical notation for guitar solo starting at measure 28. It features a bass clef, a key signature of one flat, and a 4/4 time signature. The melody consists of eighth notes. The guitar part below shows triplets of eighth notes and single notes.

32 F C

Musical notation for guitar solo starting at measure 32. It features a bass clef, a key signature of one flat, and a 4/4 time signature. The melody consists of eighth notes. The guitar part below shows single notes and triplets.

37 Bb F

Musical notation for guitar solo starting at measure 37. It features a bass clef, a key signature of one flat, and a 4/4 time signature. The melody consists of eighth notes. The guitar part below shows single notes and triplets.

E 3rd Chorus

1., 2., 3.

41 Dm Bb C C

Musical notation for the 3rd chorus starting at measure 41. It features a bass clef, a key signature of one flat, and a 4/4 time signature. The melody consists of eighth notes. The guitar part below shows single notes and triplets.

4. **F** Outro

45 C Dm Bb C

(play 8 times w/ improv. & fade)

Musical notation for the outro starting at measure 45. It features a bass clef, a key signature of one flat, and a 4/4 time signature. The melody consists of eighth notes. The guitar part below shows triplets and single notes.