

from Guns N' Roses - *Appetite for Destruction*

It's So Easy

Words and Music by W. Axl Rose, Slash, Izzy Stradlin', Duff McKagan, Steven Adler and West Arkeen

Transcribed by David Stocker

Guitars: Slash
Izzy Stradlin'

Tune down 1/2 step:
(low to high) Eb-Ab-Db-Gb-Bb-Eb

Intro

Fast ♩ = 152

*E5

(Bass)

2 Gr. 2 (dist.)

f
Harm. ---

T
A
B

12 12
12 12

2 Gr. 1 (dist.)

f
P.M.

T
A
B

0 0 X 0 X 0 X 0 X 0 X 0 X 0 X 0

*Chord symbols reflect overall harmony.

Gr. 2

Harm. ---

12 12 12 5 12 X X 0
12 12 12 5 12 X X 0
12 12 12 5 12 X X 0

Pitch: B
G

Gr. 3 (slight dist.)

mp
w/ reverb
w/ slide

12 13 14 16
12 13 14 16

**Vol. swell

Gr. 1

**Vol. swell

9 9 9 9 9 9 X X 9 X 9 9 9 9 9 9 0
X X X X X X X X 9 X 9 9 9 9 9 0
X X X X X X X X 7 X 7 7 7 7 7 0

Copyright © 1987 Guns N' Roses Music (ASCAP), EMI Virgin Music, Inc. (ASCAP) and West Arkeen Music (ASCAP)
All Rights for West Arkeen Music Controlled and Administered by EMI Virgin Music, Inc.
International Copyright Secured All Rights Reserved
Reprinted by Permission of Hal Leonard Corporation

Verse

Gr. 3 tacet

Bb5 G E5 Bb5 G E5



1. I see your sis-ter in her Sun-day dress. _ She's out to please, _ she pouts _
2. Cars are crash - in' ev - 'ry night. _ I drink 'n' drive, _ ev-'ry - thing's _ in sight. _ I

Gr. 2

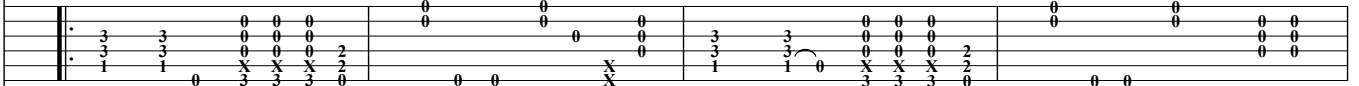
Rhy. Fig. 1

End Rhy. Fig. 1



P.M. ---|

P.M. ---|



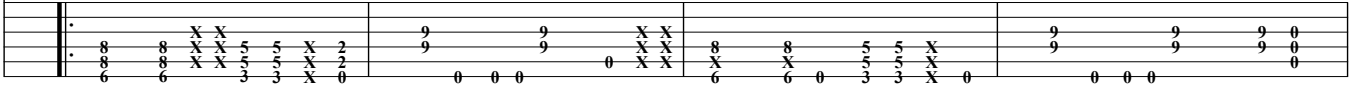
Gr. 1

Rhy. Fig. 2



P.M. ----|

P.M. ----|



Bb5 G E5 Bb5 G E5

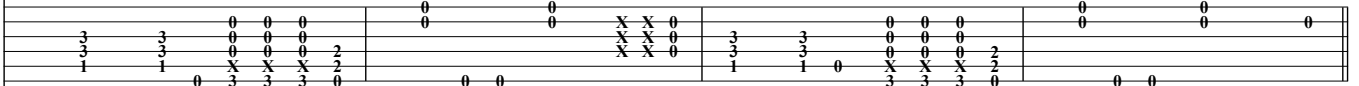


her best. _ She's out to take, to need, _ to try. _ She's read-y to make. _
make the fire _ but I miss _ the fire - fight. _ I hit the bulls - eye ev - 'ry night. _



P.M. ---|

P.M. ---|



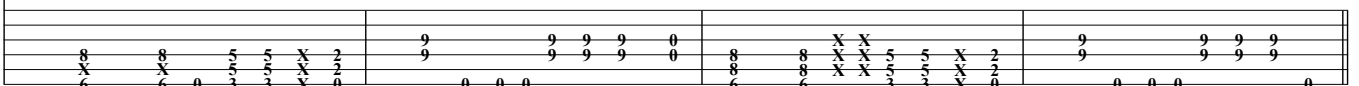
End Rhy. Fig. 2



P.M. ----|

P.M. ----|

P.M.



Chorus

A5 Bb5 E5 E(b5) A5 Bb5 E5

It's so eas - y, eas - y when ev - 'ry - bod - y's try - in' to please _

Gr. 2

Gr. 1

E(b5) A5 Bb5 E5 E(b5)

me, ba - by. { 1., 3. It's so eas - y, } eas - y when
 { 2. Yeah, it's so eas - y, }

1. A5 Bb5 E5 E(b5) 2. 2nd time, Gtr. 2: w/ Fill 1
A5 Bb5 E5

ev-'ry-bod-y's try - in' to please _ me. _ ev-'ry-bod-y's try - in' to please _ me. _ So _

P.M. P.M. P.M. - - P.M.

Half-time feel

Gtr. 1 tacet *End half-time feel
D/F# G B(b6) A7(no3rd)

eas - y, _ but noth - in' _ seems to _ please _ me. It all _

Gtr. 2 **Riff A** End Riff A

w/ chorus
let ring ----- | let ring ----- | let ring ----- | let ring ----- |

*First time only.

To Coda

**** End half-time feel**

Gtr. 3: w/ Riff A
D/F# G B(b6) A7(no3rd)

fits _ so _ right _ when I fade _ in - to _ the night. _

2. So

**Second time.

Fill 1
Gtr. 2

steady gliss.

D5

Am7 G5 F#5 E5

Why don't you just f**k off? _____

P.M. -----| P.M.

(4/2) 4 4 4 0 0 2 4 5 5 7 7 6 4 4 4 X X 2 4 X 0

P.M. -----| P.M. -----|

(4/2) 4 5 5 3 3 5 5 5 4 2 0 0 0 0

Guitar Solo

Bb5 G5 E5 F#5 G5 F#5 Bb5 G5 E5 F#5 G5 F#5

Gtr. 4 (dist.) f 1 1/2 2 1 1/2 1 1/2 1 1/2

Gtr. 2 slight P.M. -----| P.M. -----| P.M. -----|

3 3 3 2 0 0 X 2 3 3 3 2 0 0 0 2 2 0 0 2 0 3 0 2 0 1 1 1 0 0 0 0 2 0 2 0 3 0 2 0 0

Gtr. 1 P.M. -----| P.M. P.M. P.M. -----|

8 8 0 0 5 5 X 2 8 8 0 5 5 3 2 0 4 0 3 0 2 0 6 6 0 5 5 3 2 0 0 2 0 3 0 2 0

Bb5 G5 E5 F#5 G5 F#5 Bb5 G5 E5 F#5 G5 F#5

3. Ya get

steady gliss. --

P.M. P.M. P.M. P.M. P.M.

P.M. P.M. P.M. P.M.

Verse

Gtr. 1: w/ Rhy. Fig. 2 Gtr. 4 tacet

Bb5 G5 E5 Bb5 G5 E5

noth - in' for noth - in' if that's ___ what ya do. ___ Turn a - round_ bitch, I got a use for ___ you. _ Be - sides, _

Gtr. 4

steady gliss. --

Gtr. 2

let ring --

D.S. al Coda
(take 2nd ending)

Bb5 G5 E5 Bb5 G5 E5

you ain't got noth-in' bet-ter ___ to do and I'm ___ bored. ___

Gr. 2

let ring --| let ring --|

1 1 0 /15 0 2 2 2 0 1 1 0 /13 0 0 3 4 2 2 2 0

Detailed description: This system contains the first ending of the piece. It features a vocal line with lyrics and two guitar parts. The guitar parts include a melodic line with 'let ring' markings and a bass line with specific fret numbers and a slash indicating a bend.

⊕ Coda

Gr. 2: w/ Riff A (2 times)

F#5

G5 B5 A5

come ___ with me. ___ Don't ask ___ me where _ 'cause I don't ___ know. _ I'll ___

Gr. 1

Detailed description: This system is the start of the Coda section. It includes a vocal line and a guitar part with sustained chords and a melodic line. The guitar part has a 'let ring' marking and a triplet of notes.

F#5

G5

B5

A5

try ___ to ___ please ___ you. I ain't got ___ no mon-ey but it goes ___ to show... ___

Detailed description: This system continues the Coda section with a vocal line and a guitar part. The guitar part features a melodic line with a 'let ring' marking and a triplet of notes.

Outro-Guitar Solo

Gr. 1: w/ Rhy. Fig. 2 (1st 4 meas., 4 times)

Gr. 2: w/ Rhy. Fig. 1 (4 times)

Bb5

G5

E5

Bb5

G5

E5

it's so ___ eas - y.

Gr. 4

rake --| rake --| grad. bend let ring -----| slight P.H. 3

x 15 12 x 15 15 14 15 14 (15) 14 2 (2) 1 0 3 0 2 (2) 0 2 0 2

Detailed description: This system is the Outro-Guitar Solo. It features a vocal line and a guitar part with various techniques like 'rake', 'grad. bend', 'let ring', and 'slight P.H.'. The bass line includes a triplet and specific fret numbers.

B \flat 5 G5 E5

So f**k - in' eas - y. It's so ___ eas - y.

grad. bend P.H.

(2) 5 (5) 5 3 3 0

Pitch: G

B \flat 5 G5 E5 B \flat 5 G5 E5

So damn ___ eas - y.

1 1/2 1/4

5 7 5 7 7 7 5 6 5 7 5 7 8 7 5 7 5 7 5 7 9 7 9 7

B \flat 5 G5 E5

It's so ___ eas - y. Ah, ___ so f**k - in' eas - y.

1/4 1/4 1

(7) 9 9 7 9 12 14 12 14 12 15 14 (14) 12 X 14 (14) 15 12 15 15

B \flat 5 G5 E5 B \flat 5 G5 E5

It's so eas - y. Oh, it's so ___ eas - y.

1 1/2 1/4

12 15 14 15 14 12 14 12 14 14 (14) 14 12 14 13 14 13 14 X X 14 X X 14 12 14 12 13 12 12 10 (10) 12

It's so eas - y. So f**k-in' eas - y.

Gr. 4

*Gtrs. 1 & 2

*Composite arrangement

It's so eas - y. Yeah. _