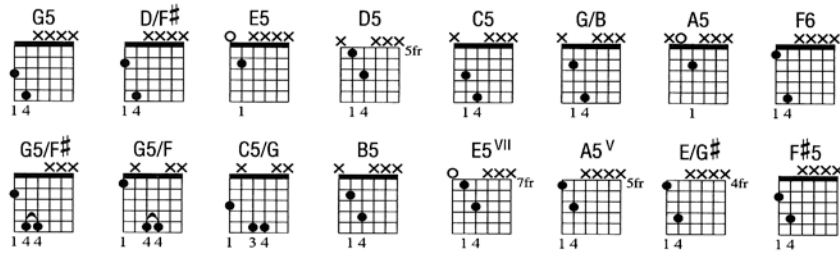


# "WELCOME TO THE BLACK PARADE" My Chemical Romance

As heard on *The Black Parade* (REPRISE)

Words and Music by My Chemical Romance • Transcribed by Jeff Perrin



**A** Intro (0:00)

Slowly ♩ = 75

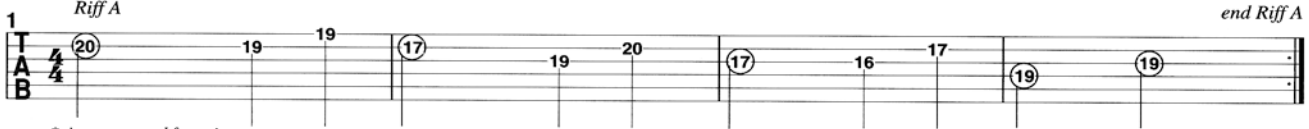
(2.) was a young boy my father took me into the city to see a marching band (1.) When He said

N.C.(G) (Bm) (Em) (G/D) (C) (G/B) (Am) (D)

\*Gtr. 1 (elec. w/clean tone)

Riff A

end Riff A



"Son when you grow up would you be the saviour of the broken the beaten and the damned"

He said

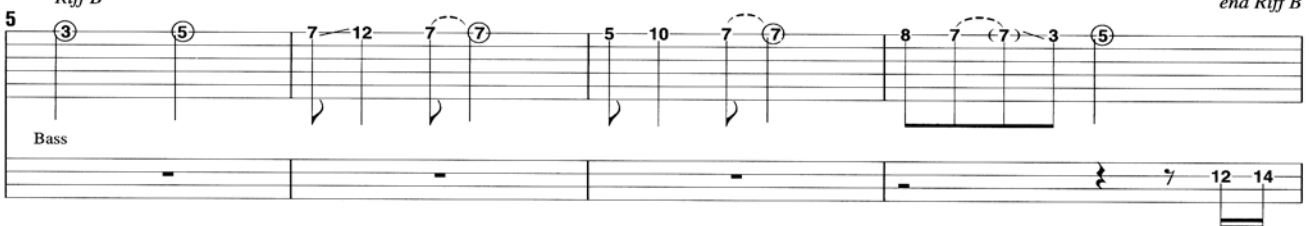
(G) (D/F#) (Em) (G/D) (C) (G/B) (Am) (D)

Gtr. 1 plays Riff A three times (see bar 1)

Gtr. 2 (elec. w/clean tone)

Riff B

end Riff B



"Will you defeat them your demons and all the non-believers the plans that they have made Because

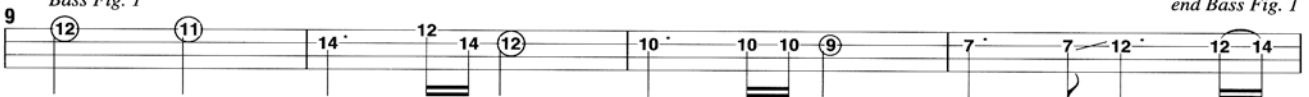
(G) (D/F#) (Em) (G/D) (C) (G/B) (Am) (D)

Gtr. 2 plays Riff B twice (see bar 5)

Bass

Bass Fig. 1

end Bass Fig. 1



one day I'll leave you a phantom to lead you in the summer to join the black parade"

(G) (D/F#) (Em) (G/D) (C) (G/B) (Am) (D)

Gtr. 3 (elec. w/dist.)



Bass repeats Bass Fig. 1 simile (see bar 9)

# "WELCOME TO THE BLACK PARADE"

17

G5 D/F# E5 D5 C5 G/B A5 D5 G5

Gr. 4 (elec. w/dist.)

Gr. 3

Gr. 2 (w/dist.)

Gr. 2 (w/dist.)

Bass

**B** (1:22)

Fast ♩ = 194

22

G5 D/F# E5 D5

Gr. 2

Gr. 1

Bass

\*repeat previous chord

26

C5 D5

1. Some -

(repeat previous bar)

# "WELCOME TO THE BLACK PARADE"

**C** Verses (1:32, 2:12)

times I get the feeling she's watching over me and  
 (2.) world that sends you reeling from decimated dreams Your

30

Gtrs. 1 and 2  
 G5 D/F# F6 C5

Bass  
 Bass Fig. 2

other times I feel like I should go  
 misery and hate will kill us all When So

34

Gtr. 2  
 G5 D5

Gtr. 1  
 P.M.

Bass  
 end Bass Fig. 2

pitch: G D B G

through it all the rise and it fall the bodies in the streets and  
 paint it black and take and back Let's shout it loud and clear Defiant

38

Gtrs. 1 and 2  
 G5 G5/F# G5/F C5

Bass repeats Bass Fig. 2 (see bar 30)

when you're gone we want you all to know we'll carry on  
 to the end we hear to the call to carry on

42

Gtr. 2  
 C5/G G D5

Gtr. 1  
 P.M.

# "WELCOME TO THE BLACK PARADE"

## D 1st and 2nd Choruses (1:52, 2:32)

We'll carry on and though you're  
 We'll carry on and though you're

G5 D/F# E5 D5

46 Gtr. 2

Gtr. 1  
*Rhy. Fig. 1*

Bass  
*Bass Fig. 3*

dead and gone believe me your memory will carry on  
 dead and gone believe me your memory will carry on

C5 D5

50

*end Rhy. Fig. 1*

*end Bass Fig. 3*

We'll carry on and in my  
 We'll carry on and in my  
 We'll carry on and in my  
 We'll carry on and in my

G5 D/F# E5 D5

54 Gtr. 2

*Bass repeats Bass Fig. 3 (see bar 46)*

heart I can't contain it the anthem won't explain it  
 broken and defeated your your 2. A

C5 D5

58

# "WELCOME TO THE BLACK PARADE"

2.

**E** Bridge (2:51)

weary widow marches on and on we carry through the years oh  
 Disappointed faces of your peers oh

62

Chords: D5, C5, B5, E5

Gr. 2

Gr. 1

Bass

(repeat previous bar)

ha ha Take a look at me 'cause I could not care at  
 ha ha C5 (Cm/Eb) (Dm6) (Cm) Bb5

67

**F** (3:07)

Slower ♩ = 88

Do or die You'll never make me because the world will never take my heart Go and try you'll never break me You want it all You wanna play this  
 (all)  
 N.C. (G5) (D/F#) (E5) (D5) (C5) (G5) (C5) (D5)

72

Bass Fig. 4

end Bass Fig. 4

# "WELCOME TO THE BLACK PARADE"

part Won't explain or say I'm sorry I'm not ashamed I'm gonna show my scar You're the chair for all the broken

Gtr. 2 (G5) (D/F#) (E5) (D5) (C5) (G5)

76

Gtr. 1

Bass repeats Bass Fig. 4 (see bar 72)

Listen here because it's only I'm just a man I'm not a hero

(C5) (D5) (A5) (E/G#)

Gtr. 4 79

Gtr. 3

Gtr. 2

Gtr. 1

Bass

just a boy who's meant to sing this song Just a man I'm not a hero

(F#5) (E5) (D5) (A5)

81



# "WELCOME TO THE BLACK PARADE"

though you're broken and defeated your

98

**I** **Outro** (4:02)

Slower ♩ = 93 w/half-time feel

weary widow marches

on (Do or die you'll never make me because the world will never take my

E5<sup>VII</sup> A5<sup>V</sup> E/G# F#5 E5

Gtr. 2

101

Gtr. 1

Bass

heart Go and try you'll never break me You want it all I'm gonna play this on part (Do or die You'll never make me

D5 E5 A5<sup>V</sup> E/G#

105

because the world We'll carry on We'll carry on We'll carry on  
will never take my heart Go and try you'll never break me You want it all I'm gonna play this part)

F#5 E5 D5 E5 A5

108